

FULL LED HEADLIGHT WITH SWITCHABLE SEQUENTIAL TURN SIGNAL FOR 2018-2024 VOLVO VNL

Item Numbers: 32936, 32937, 32938, 32939

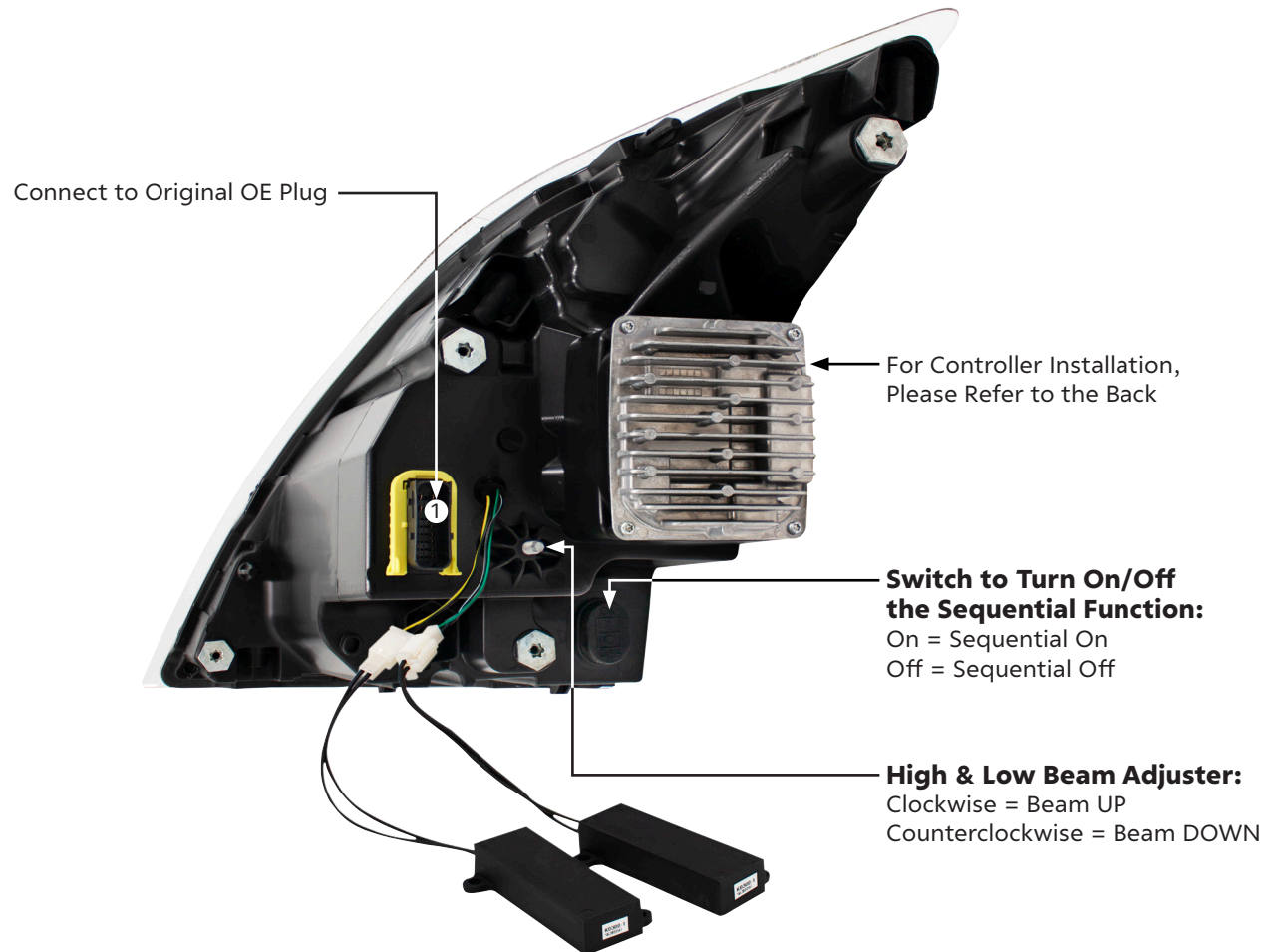
NORMAL FOGGING / CONDENSATION

This bulletin provides information regarding headlights that may experience fogging or condensation inside of the headlamp assembly. A drop in air temperature may cause condensation to form on the inside of a cool headlamp lens. Generally, fogging is considered normal and can be eliminated by turning on the headlamp with the engine running for several minutes. In most cases, operating the vehicle in normal driving condition will clear the headlamp fogging. Headlamp assembly replacement **WILL NOT** be necessary in most cases.

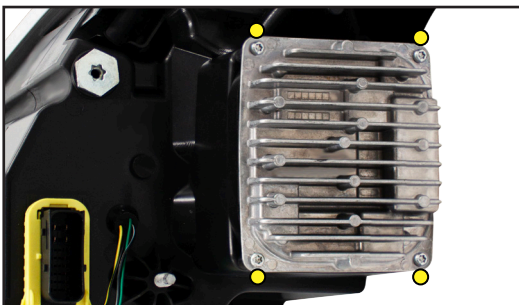
NOTE

- If any of the following conditions occur, please consult with a professional mechanic to determine the water source:
 - If condensation/fogging fails to dissipate after operating the headlight with the engine running for 30 minutes
 - If water pooled inside the headlamp
- A high pressure washer may also cause water to be forced into the headlamp assembly.

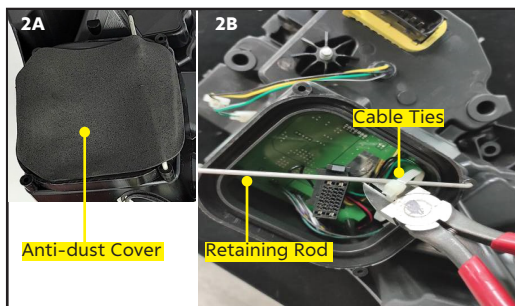
Connect Plug ❶ to Original OE Wire Harness



INSTRUCTIONS ON HOW TO INSTALL THE CONTROLLER

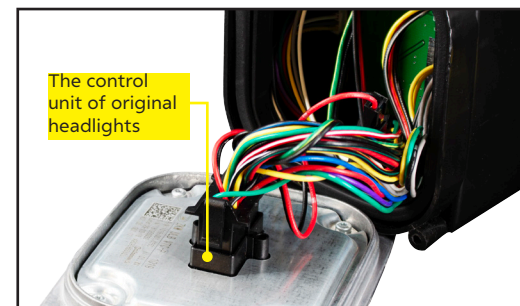


Step 1: Please remove the control unit from the original headlights by unscrew the 4 screws in control unit and preserve it.



Step 2A: Please remove the anti-dust cover on the back of new headlights.

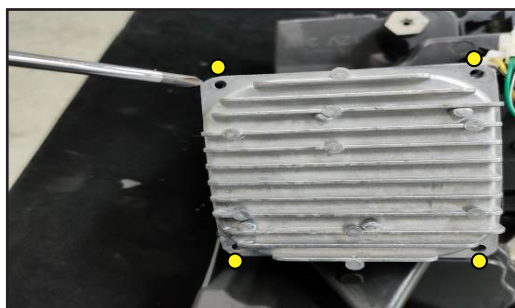
Step 2B: Cut off the cable ties of new headlights and remove both retaining rod and cable ties carefully.



Step 3: Connect the plug of new headlights with the control unit of original headlights.



Step 4: Assemble the control unit of original headlights with the new headlights.



Step 5: Tighten the 4 screws to fix the control unit on the new headlights.



Step 6: After finish the step 1 to 5, start to install the new headlight on the truck.

IMPORTANT REMINDER:

- Please preserve your truck's original headlights' control units as they will need to be placed on the new headlights.