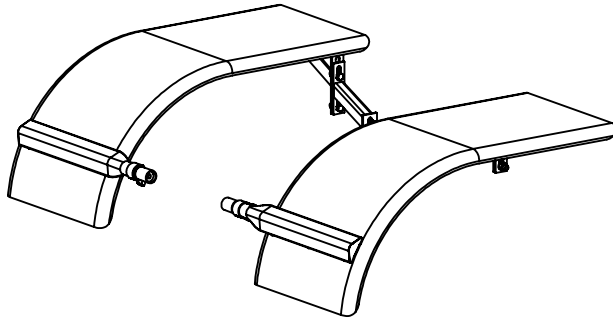
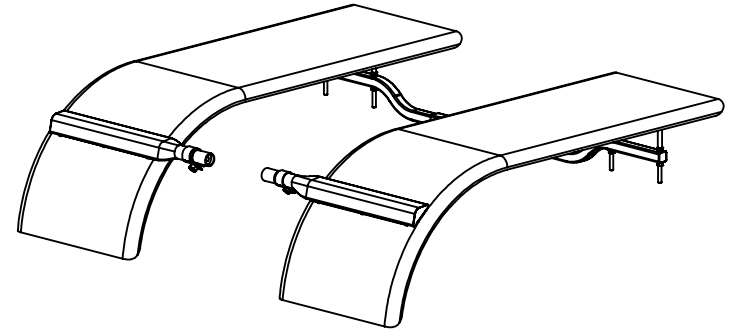




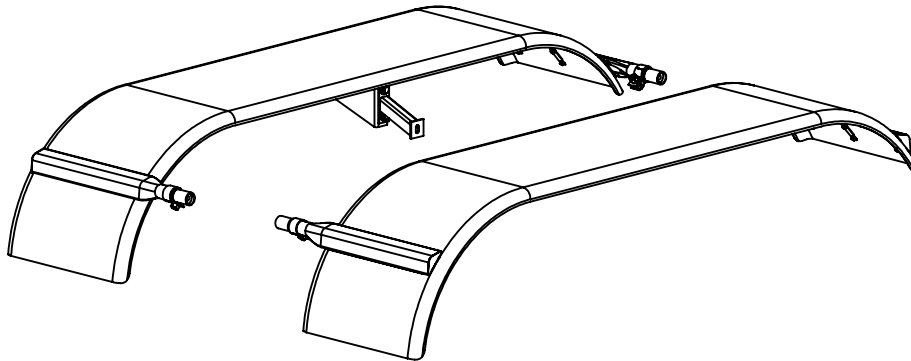
INSTALLATION INSTRUCTIONS



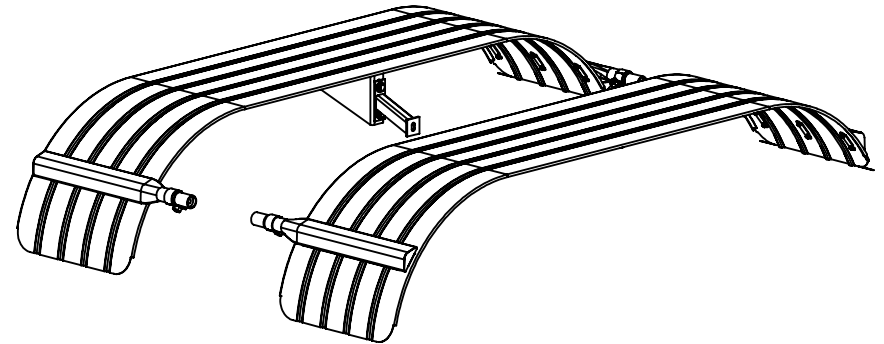
HALF FENDER 60" - 66"



HALF FENDER 80"



120" FULL FENDER



120" FULL FENDER

United Pacific <small>TITLE:</small> FENDER INSTALLATION	<small>DWG. NO.</small> UN-PAC-INS	<small>SIZE</small> A
	<small>NAME</small>	<small>DATE</small>
	<small>DRAWN BY</small> G.L.	2024-03-11
	<small>SCALE:</small> 1:28 <small>WEIGHT:</small> LBS	<small>SHEET:</small> 1 OF 4



INSTALLATION INSTRUCTIONS

BE SURE TO READ AND UNDERSTAND ALL INSTRUCTIONS BEFORE BEGINING INSTALLATION

ALL WARANTIES WILL BE HONORED ONLY IF UNITED PACIFIC MOUNTING KITS AND ALL HARDWARE ARE USED DURING INSTALLATION

CAUTION:

- TO REDUCE STRESS ON FENDER, THE TIGHETENING OF ALL HARDWARE SHOULD BE DONE AS THE LAST STEP OF FENDER'S INTALLATION. THIS WILL REDUCE FENDER BINDING DURING PROCESS.
- BEFORE DRILLING ANY HOLES IN FENDERS AND POSITIONING FRONT AND CENTER ARMS, DO A TEMPORARY INSTALLATION WITH CLAMPS TO LOCATE DRILL POINTS.
- WHEN USING CLAMPS, ALWAYS USE PROTECTION BETWEEN CLAMP AND PIECE TO AVOID DAMAGES.

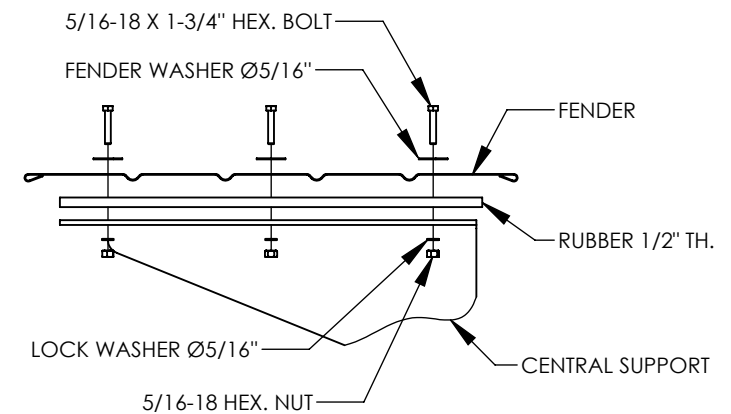
REQUIRED MATERIAL: DRILL AND DRILL BITS, RATCHET WITH SOCKETS AND/OR WRENCHES, TORQUE WRENCH, CLAMPS TO HOLD TEMPORARILY FENDER IN PLACE DURING INSTALLATION

INSTRUCTIONS:

- 1- ASSEMBLE FRONT MOUNTING ARMS, LATERAL TUBES AND MOUNTING COLLARS AS PER ASSEMBLY DRAWING. SCREW BOLTS ENOUGH TO HOLD THEM IN PLACE AND ALLOW ADJUTSMENT, DO NOT TIGHTEN TOO FIRMLY AT THIS STEP. IF CENTRAL SUPPORTS WILL BE USED, ASSEMBLE THEM TOO.
- 2- DROP SUSPENSION.
- 3- PLACE 1" SHIMS ON TIRES AND PLACE FENDER ON THEM (SEE IMAGE 1, NEXT PAGE).
- 4- LOCATE FRAME BOLTS TO BE REPLACED BY FRONT MOUNTING ARM AND CENTRAL MOUNTING SUPPORT. IF IT IS NOT POSSIBLE TO USE BOLTS ON FRAME, LOCATE A PLACE WHERE IT WILL BE POSSIBLE TO DRILL HOLES FOR THE SUPPORTS.
- 5- INSTALL FRONT MOUNTING ARM TO TRUCK FRAME (SEE IMAGE 2, NEXT PAGE).
- 6- USING FRONT MOUNTING ARM AS PATTERN, MARK HOLES FOR THE ARM ON THE FENDER AND DRILL.
- 7- INSTALL FRONT MOUNTING ARM TO FENDER AS PER ASSEMBLY DRAWING OF THE FRONT MOUNTING ARM FOR PROPER INSTALLATION.
- 8- INSTALL CENTRAL MOUNTING SUPPORT TO FRAME.
- 9- MARK HOLES FOR CENTRAL MOUNTING SUPPORT ON FENDER AND DRILL THEM.
- 10- INSTALL FENDER TO CENTRAL MOUNTING SUPPORT AND ADJUST HEIGHT TO LEVEL THE FENDER.
 - * FOR ADJUSTABLE BRACKETS: ONCE THE SUPPORT IS INSTALLED AT REQUIRED HEIGHT, CUT EXCEEDING LENGHT OF THREADED RODS UNDER HEXAGON NUTS. MESURE DISTANCE BETWEEN TOP PLATE AND SUPPORT AND CUT PLASTIC TUBE AT THIS LENGHT. INSERT PLASTIC TUBE ON THREADED RODS TO PROTECT THEM (SEE IMAGE 3)
- 11- TIGHTEN ALL BOLTS AND SCREW FIRMLY. TORQUE COLLAR'S BOLT AS INDICATED ON PAGE 4.

IMPORTANT NOTICE

PLEASE TAKE NOTE THAT TO VALID THE WARRANTY, YOU HAVE TO FOLLOW THE INSTALLATION DRAWING BELOW. THE OUTSIDE BOLTS SHOULD BE AS CLOSE AS POSSIBLE TO THE GROOVE. RUBBER INSULATION STRIP (1/2" X 2" X 22" LG) SHOULD BE USED.



NOTE: HARDWARE SHOWN ON THIS VIEW AND RUBBER 1/2" TH ARE NOT INCLUDED WITH CENTRAL SUPPORTS

United Pacific

TITLE:
FENDER INSTALLATION

DWG. NO.
UN-PAC-INS

SIZE
A

NAME	DATE
DRAWN BY G.L.	2024-03-11
SCALE: 1:12	WEIGHT: LBS
SHEET: 2 OF 4	

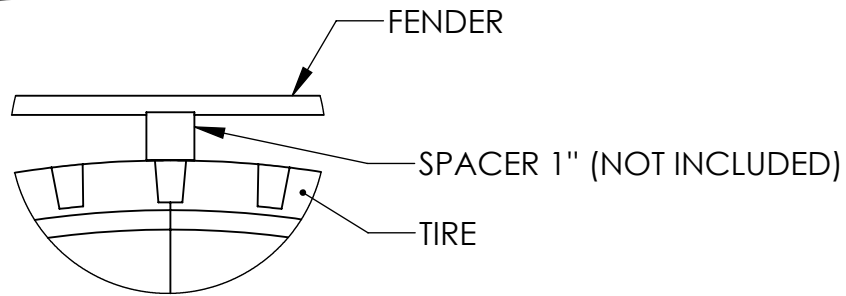


IMAGE 1

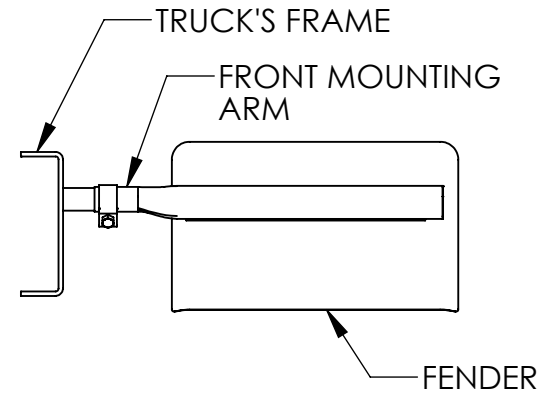


IMAGE 2

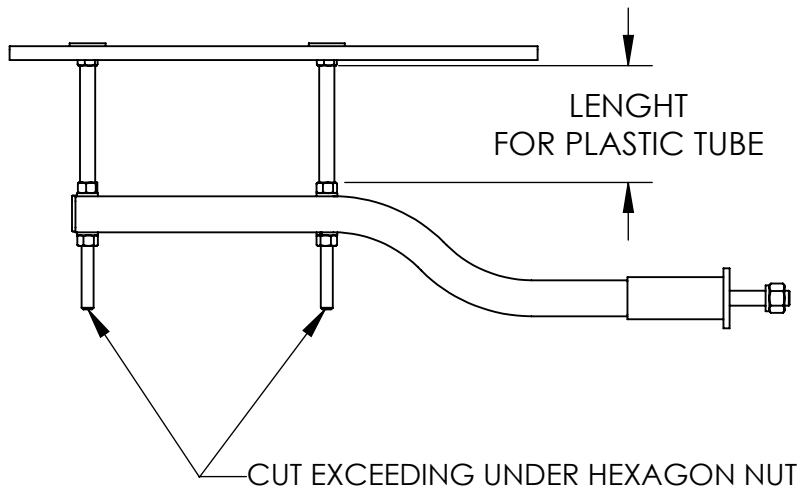
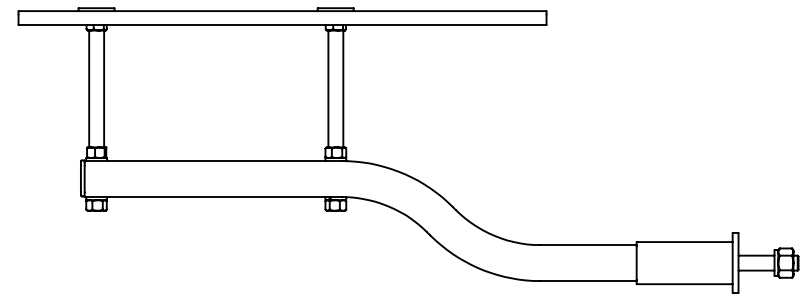


IMAGE 3

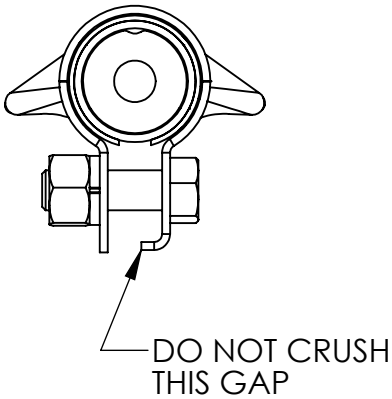
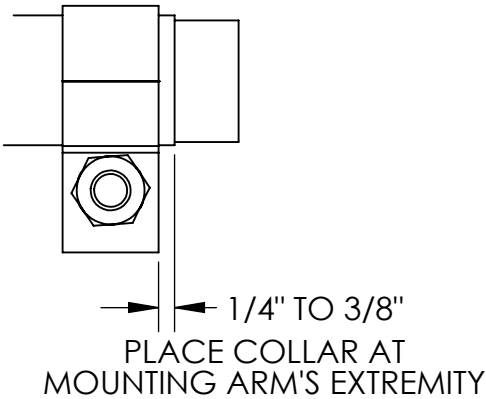
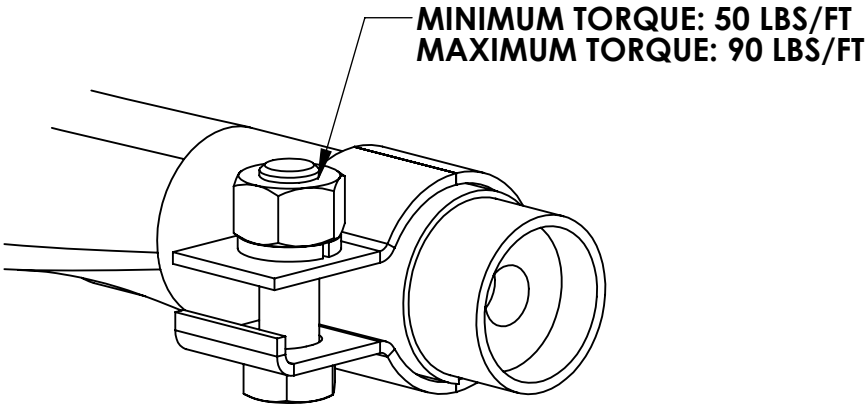
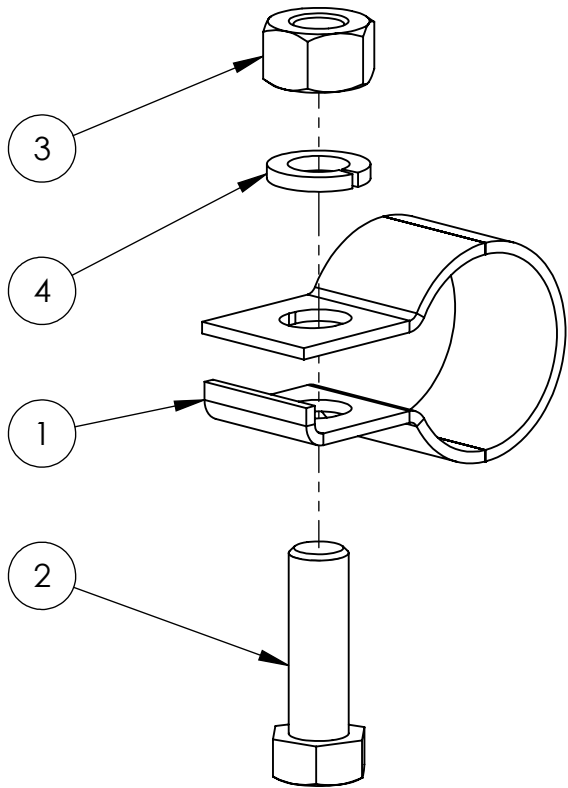


CENTRAL SUPPORT WITH CUTTED THREADED RODS

<div>United Pacific</div>	DWG. NO. UN-PAC-INS		SIZE A
	NAME		DATE
	DRAWN BY	G.L.	2024-03-11
	SCALE: 1:16	WEIGHT: LBS	SHEET: 3 OF 4
TITLE: FENDER INSTALLATION			



COLLAR ASSEMBLY INSTRUCTIONS

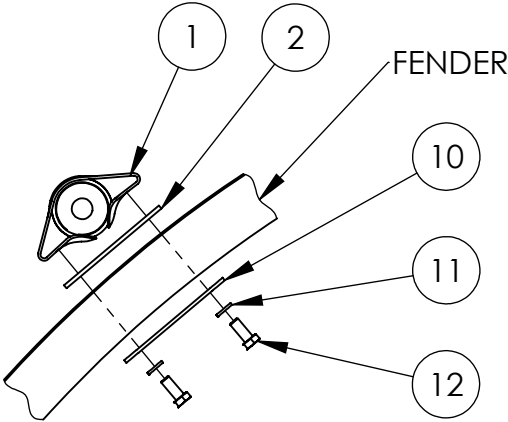
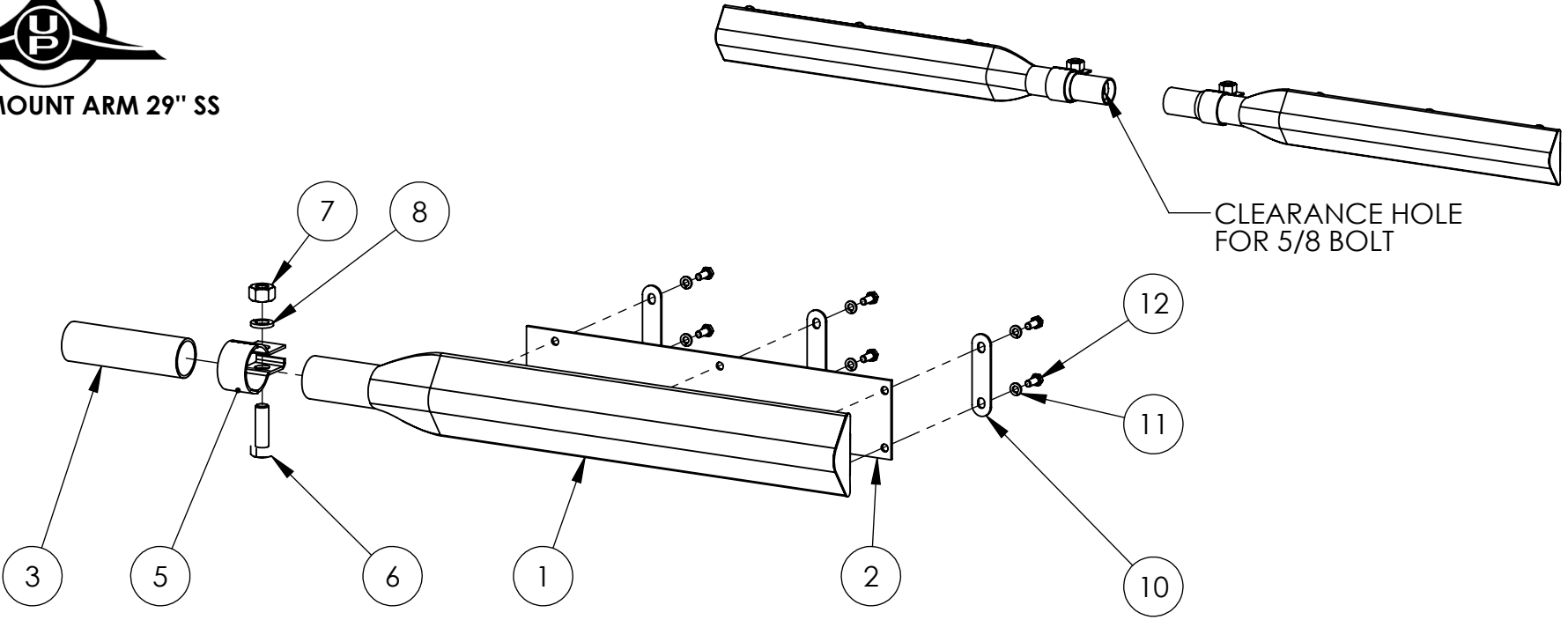


ITEM	DESCRIPTION	QTY
1	STAINLESS STEEL COLLAR	1
2	HEX BOLT 5/8-11 X 2"LG	1
3	HEX NUT 5/8-11NC	1
4	LOCK WASHER 5/8"	1

United Pacific <small>TITLE:</small> FENDER INSTALLATION	<small>DWG. NO.</small> UN-PAC-INS	<small>SIZE</small> A
	<small>NAME</small>	<small>DATE</small>
	<small>DRAWN BY</small> G.L.	2024-03-11
	<small>SCALE: 1:2</small>	<small>WEIGHT: LBS</small> <small>SHEET: 4 OF 4</small>



SIDE MOUNT ARM 29" SS

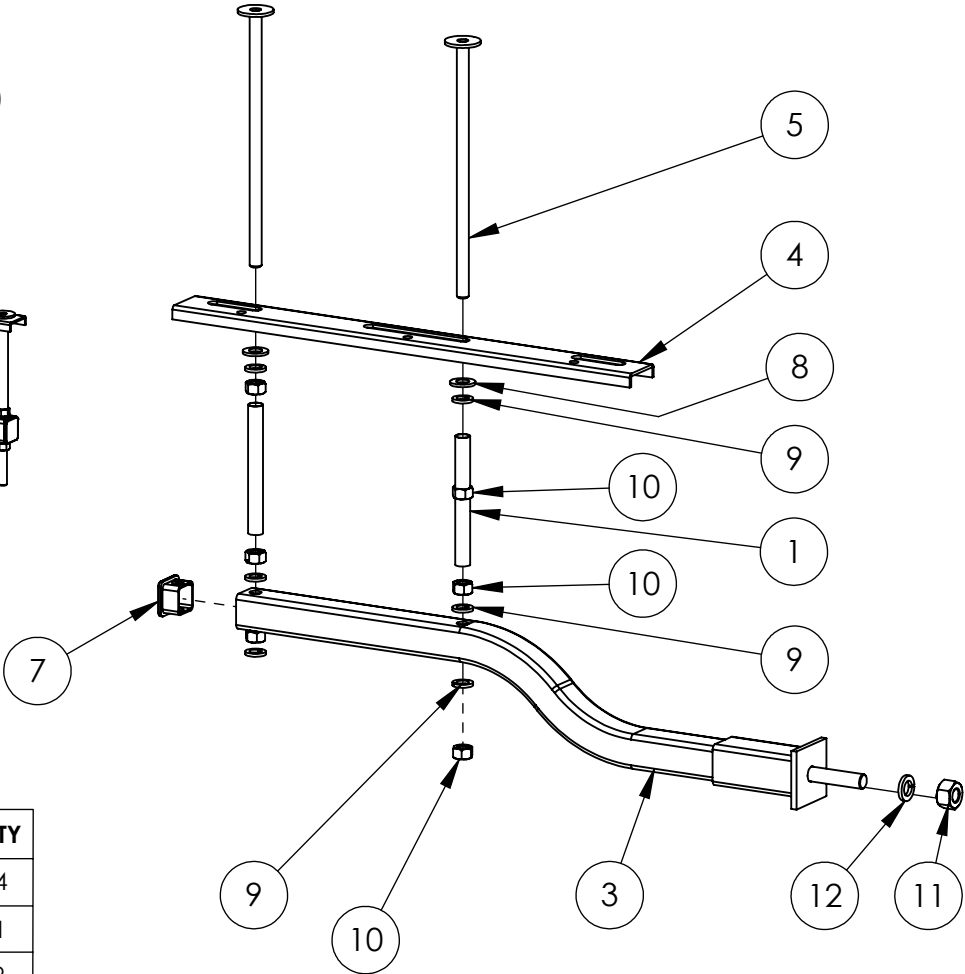
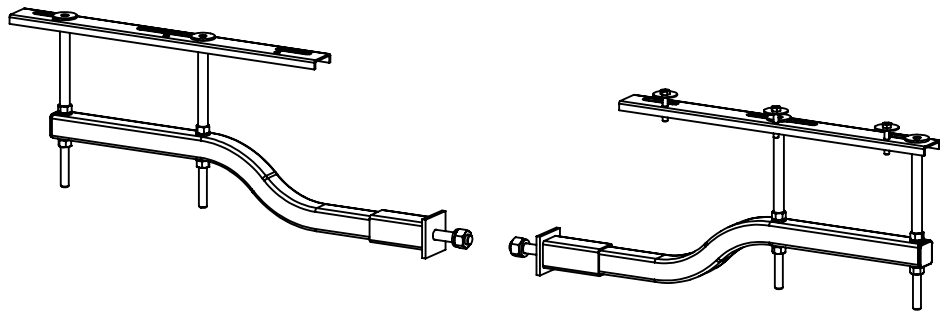


ITEM	DESCRIPTION	QTY
1	SIDE MOUNT ARM	2
2	RUBBER GASKET	2
3	LATERAL TUBE	2
4	STAINLESS STEEL COLLAR KIT	2
5	STAINLESS STEEL COLLAR	2
6	HEX BOLT 5/8-11 X 2"LG	2
7	HEX NUT 5/8-11NC	2
8	LOCK WASHER 5/8"	2
9	BOLTS KIT	1
10	BACKUP PLATE	6
11	LOCK WASHER	12
12	HEX BOLT	12

United Pacific	DWG. NO.	SIZE
	92180	A
	NAME	DATE
	DRAWN BY G.L.	2024-03-19
TITLE:		
SIDE MOUNT ARM KIT		
SCALE: 1:8	WEIGHT: LBS	SHEET: 1 OF 1



STANDARD DUTY **UNIVERSAL ADJUSTABLE CENTER SUPPORT (1 STUD)**



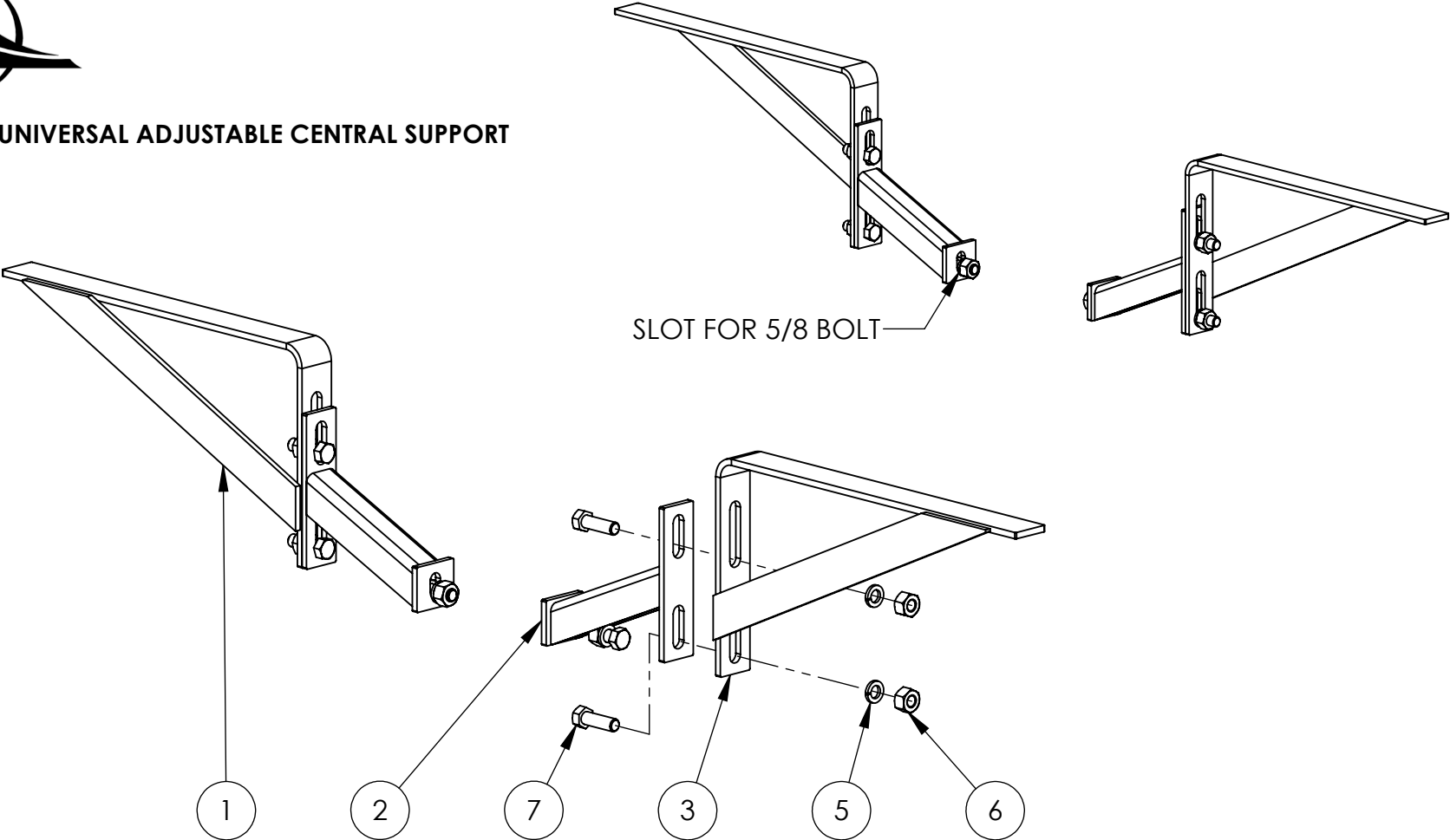
ITEM	DESCRIPTION	QTY
1	PLASTIC TUBE 5/8"DIA X 12"LG	4
2	ADJUSTABLE UNIVERSAL CENTER SUPPORT (1 STUD)	1
3	CENTRAL SUPPORT TUBING ASSEMBLY	2
4	PLATE FOR FENDER SUPPORT	2
5	THREADED ROD 1/2-13NC X 10"LG	4
6	BOLTS KIT	1
7	PLASTIC CAP 1 1/2"SQ.	2
8	FLAT WASHER 1/2"	5
9	LOCK WASHER 1/2" Z	12
10	HEX NUT 1/2-13 NC	12
11	HEX NUT 5/8-18NF	2
12	LOCK WASHER 5/8"	2

PATENT No.: US 7,469,929 B2
CA 2,541,551

United Pacific	DWG. NO.	SIZE
	91210	A
	NAME	DATE
	DRAWN BY G.L.	2024-03-19
TITLE: STANDARD DUTY UNIVERSAL CENTER SUPPORT		SCALE: 1:8 WEIGHT: LBS SHEET: 1 OF 1



HEAVY DUTY **UNIVERSAL ADJUSTABLE CENTRAL SUPPORT**



ITEM	DESCRIPTION	QTY
1	ADJUSTABLE CENTRAL SUPPORT	1
2	SUPPORT BRACKET	2
3	ADJUSTABLE CENTRAL SUPPORT	1
4	BOLTS KIT	1
5	LOCK WASHER 5/8"	6
6	HEX NUT 5/8-11NC	6
7	HEX BOLT 5/8-11 X 2"LG	4
8	HEX BOLT 5/8-11 X 1½"LG	2

United Pacific	DWG. NO.	SIZE
	91270	A
	NAME	DATE
	DRAWN BY G.L.	2024-03-19
TITLE:		
HEAVY DUTY UNIVERSAL CENTRAL SUPPORT		
SCALE: 1:8	WEIGHT: LBS	SHEET: 1 OF 1